

- [CarbonDialTable](#)
- [CDTAnatomy](#)
- [RotaryDialTable](#)
- [CDTPhotoGallery](#)
- [CDTThkWeight](#)
- [CDTinertia](#)
- [CDTBending](#)
- [Indexer Performance](#)
- [CDTtooling](#)
- [CDTcosts](#)
- [Replacement DialTable](#)

**Photo Gallery
CARBON
DIALTABLES**

**CDT PHOTO
GALLERY**
[PDF Download](#)



Special Carbon Dial Table and Denysium Plate for Automotive application



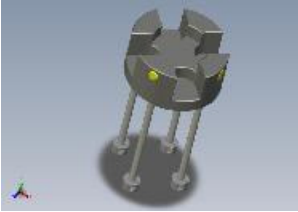
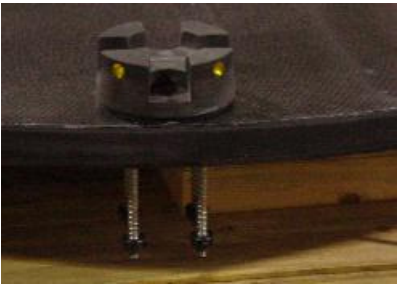
Special Carbon Dial Table with Reinforced Glass-Fiber edge for tool mounting.



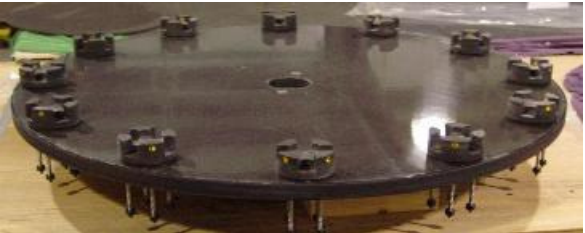
Carbon Dial Table and Tool hole mounting for filling application.



A 42" Diameter Carbon Dial Indexing Table with 12 stations. The tooling station nests are also composite.



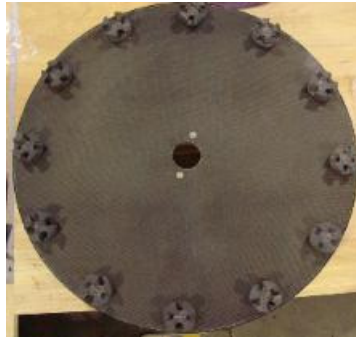
Composite tooling nest designed by ACI to support the customers product.



Edge view of the Carbon Dial Table.



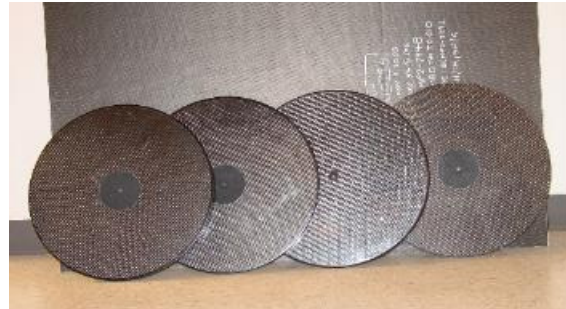
A 15lb Ribbed Carbon Fiber Dial Table, Coated with Polane. The dial table is a replacement for an existing aluminum dial table at a automotive clients facility.



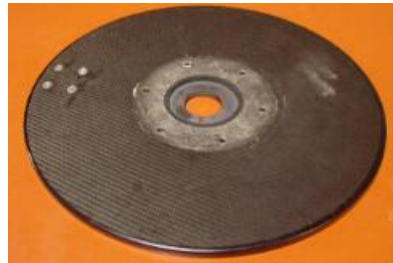
42" Carbon Dial Table, weighs with tooling 32 lbs. The dial can be compared to similar dials from Aluminum 132 lbs and steel 391 lbs (both with no tooling)



30in Carbon Dial table with composite tooling.



18 inch Diameter Carbon Dial Table Blanks.



18 Inch Diameter Carbon Dial Table Drilled, and Inserted for Indexer Mounting. Dial Drilled and Inserted for standard tooling hole pattern, single station.

[Top of Page](#)



600, 18 th Av
Rockford, IL 61104
Tele: 815 986 4184

Fax: 815 986 4199

e-mail: sales@aci-sci.com

www.aci-sci.com

Advanced Composite Industries, All rights Reserved 2006

